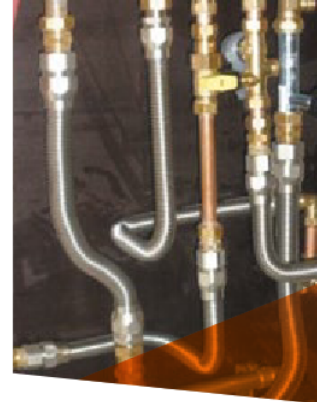


# Anaflex® -click fittings:

## NICKEL PLATED BRASS FITTINGS WITH UNIQUE CLICK-SYSTEM



For the stainless steel ANAFLEX® corrugated hose an unique mounting fitting has been developed. The major advantage of the ANAFLEX® -CLICK fitting is the quick-mounting directly on the hose. After turning the backnut (2 till 3 full turns) a tensile strong and liquid-tight connection is made. The nickel plated brass fittings are suitable for cold and hot water as well as steam.

### Material & Construction:

**Construction:** Nickel plated brass fitting, consisting of 6 parts (body, counter nut, retaining ring and filler ring are nickel plated brass, internal sealing sleeve is from PTFE and the internal flat seal is from silicone rubber).

**Special approvals:** Click system tested and approved by the "Institut für Solartechnik SPF" (Switzerland).

**Temperature range:** 0 °C till +110 °C (for higher temperatures please consult Anamet Europe B.V.).

**Colour:** metal.

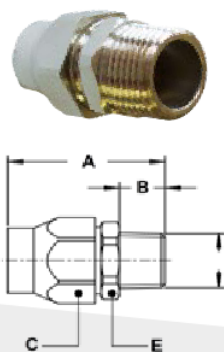


Figure C3, nickel plated brass click fitting, male, BSPT

THREAD size	ANAFLEX Size (DN)	ID HOSE (MM)	DIMENSIONS IN MM					STANDARD PACKAGE	ARTICLE NUMBER	WEIGHT (Kg/100)
			A	B	C	D	E			
3/8" BSPT	DN 12	12,2	49	14	24	-	22	10	400.010.3	6,1
1/2" BSPT	DN 12	12,2	50	15	24	-	22	10	400.012.3	6,3
1/2" BSPT	DN 16	16,2	58	17	29	-	27	10	400.016.3	9,7
3/4" BSPT	DN 16	16,2	59	17	29	-	27	10	400.018.3	10,5
3/4" BSPT	DN 20	20,3	62	17	36	-	34	10	400.020.3	16,0
1" BSPT	DN 20	20,3	66	18	36	-	34	10	400.022.3	18,3
1" BSPT	DN 25	24,0	63	18	42	-	40	5	400.025.3	22,8

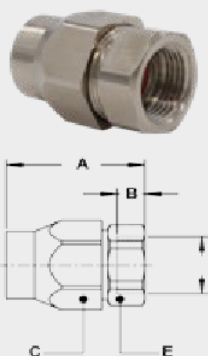


Figure C5, nickel plated brass click fitting, female, BSPP, flat seat

THREAD size	ANAFLEX Size (DN)	ID HOSE (MM)	DIMENSIONS IN MM					STANDARD PACKAGE	ARTICLE NUMBER	WEIGHT (Kg/100)
			A	B	C	D	E			
1/2" BSPP	-	DN 16	48	9	29	-	27	10	400.010.5	9,5
3/4" BSPP	-	DN 20	51	10	36	-	34	10	400.020.5	715,0

## ANAFLEX® -CLICK FITTINGS

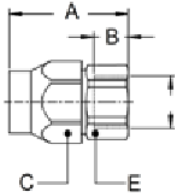


Figure C6, nickel plated brass click fitting, female, BSPP

THREAD size	ANAFLEX Size (DN)	ID HOSE (MM)	DIMENSIONS IN MM					STANDARD PACKAGE	ARTICLE NUMBER	WEIGHT (Kg/100)
			A	B	C	D	E			
3/8" BSPP	DN 12	12,2	45	13	24	-	22	10	400.010.6	6,5
1/2" BSPP	DN 12	12,2	48	15	24	-	27	10	400.012.6	7,8
1/2" BSPP	DN 16	16,2	54	15	29	-	27	10	400.016.6	9,9
3/4" BSPP	DN 16	16,2	55	17	29	-	32	10	400.018.6	11,8
3/4" BSPP	DN 20	20,3	58	17	36	-	34	10	400.020.6	16,6
1" BSPP	DN 20	20,3	62	20	36	-	41	10	400.022.6	22,1
1" BSPP	DN 25	24,0	65	20	42	-	40	5	400.025.6	22,8

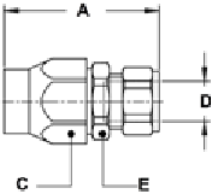


Figure C8, nickel plated brass click fitting, pipe compression.

PIPE diameter	ANAFLEX Size (DN)	ID HOSE (MM)	DIMENSIONS IN MM					STANDARD PACKAGE	ARTICLE NUMBER	WEIGHT (Kg/100)
			A	B	C	D	E			
Ø 15 mm	DN 16	16,2	60	-	29	15	27	10	400.015.8	9,9
Ø 18 mm	DN 16	16,2	61	-	29	18	32	10	400.018.8	11,8
Ø 18 mm	DN 20	20,3	66	-	36	18	34	10	400.020.8	16,6
Ø 22 mm	DN 20	20,3	67	-	36	22	41	10	400.022.8	22,1